

A black and white photograph of a man and a woman wearing hard hats and safety vests, looking up at a construction site. The man is on the left, wearing a plaid shirt and a dark vest. The woman is on the right, wearing a light-colored jacket and a dark vest. They are both looking upwards with expressions of interest and focus. In the background, there are construction cranes and the skeletal structure of a building under construction.

# CONSTRUCTING THE EUROPE OF TOMORROW

**#WEMAKE2BUILD**

# OUR MOTTO



COMMITTEE FOR EUROPEAN  
CONSTRUCTION EQUIPMENT

Constructing the  
Europe of Tomorrow

#WeMake2Build



# OUR MISSION

CECE is the voice of the European construction equipment manufacturers. Founded in 1959, we are a European-level federation that engages with EU policymakers on behalf of our membership. Based in Brussels, we are actively involved in European Commission expert and consultative groups.

Through our national member associations, we speak on behalf of an industry made of **1,200 companies** employing **300,000 people** and creating a value of **€40 billion** annually. Relying on a wide network of industry experts engaged across a broad range of policy areas, we coordinate the views of our members with the aim of achieving a fair and competitive regulatory environment and promoting safety, compliance and innovation in the construction equipment sector.

We are committed to **Constructing the Europe of Tomorrow** by securing a globally competitive European construction equipment industry through four main goals.



**€40 BN**  
TURNOVER



**300 000**  
EMPLOYEES



**1 200**  
COMPANIES



ESTABLISHED IN  
1959



BASED IN  
BRUSSELS

# OUR GOALS

1. Improve market conditions, increase productivity and sustainability in the construction equipment manufacturing industry
2. Stimulate technical progress for improved productivity and working conditions
3. Maximise members' contribution to the European economy and society
4. Represent the European construction equipment industrial interests on the global level

# MEMBERSHIP

**.AGORIA**

**ANMOPYC**  
SPANISH MANUFACTURERS  
ASSOCIATION OF CONSTRUCTION  
AND MINING EQUIPMENT

**CEA**  
Construction Equipment Association

**EVOLIS**

**Technology Industries  
of Finland**

**FMB**

**METALTECHNOLOGY AUSTRIA**

**SAGE**  
SWEDISH ASSOCIATION FOR  
CONSTRUCTION EQUIPMENT

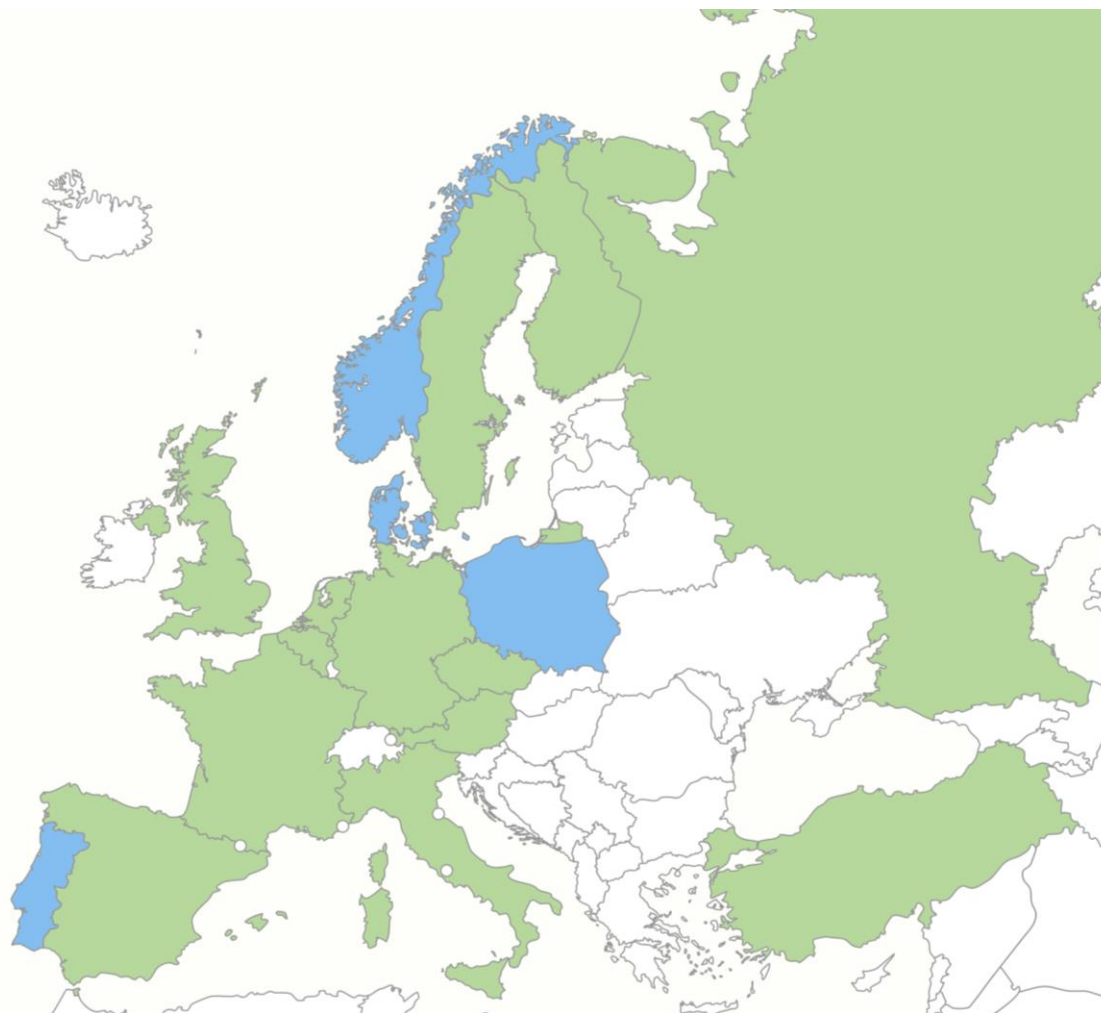
**SVSSS**  
CZECH REPUBLIC



**CECE Membership**

Members

Associate Members



**UNA  
CEA**

**VDMA**

**IMDER**  
"TÜRKİYE CONSTRUCTION EQUIPMENT  
DISTRIBUTORS & MANUFACTURERS ASSOCIATION"



**ASSOCIATE MEMBERS**



**DRESSTA**



**STAFFORD SOIMA**  
TOWER CRANES

**Trackunit**

CECE

**#WEMAKE2BUILD**

# CECE PRODUCT AREAS COVERED

Earth-moving

Road building

Tower cranes



Concrete  
equipment

Hydraulic  
attachments

Mining



# Enhancing Market Surveillance

- Importance of effective market surveillance for safety and compliance
- **Current challenges:**
  - Difficulties engaging with authorities
  - Issues with **grey imports** and non-compliant machinery from certain regions
  - Specific problems with older second-hand machinery not meeting European standards
- Focus on **control at points of entry**, such as ports and customs

# CECE's Initiative: Brochures Overview

- **Practical tools** for authorities and end users
- Part of a 10+ year review process
- Cooperative effort between private and public sectors
- Opportunity for interaction with customs authorities



**6 Miniguides for customers, users, customs and market surveillance authorities**



# BROCHURES

Excavators

Compact  
Excavators

Tower Cranes

Wheel-  
loaders



Compactor  
and Roller

Liabilities for  
non-  
Compliance

## A BRIEF GUIDE FOR IDENTIFICATION OF NON-COMPLIANT CONSTRUCTION MACHINERY

Is this excavator compliant  
with European legislation?

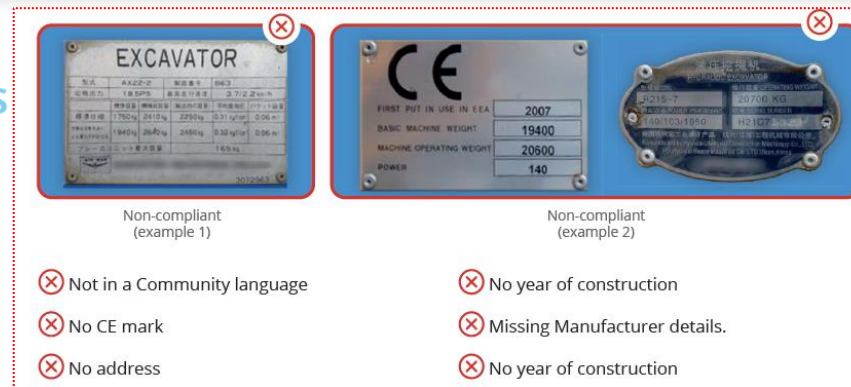


# Brochures (example): Excavators

## QUICK REFERENCE GUIDE TO NON-COMPLIANCE OF EXCAVATORS

Easy to check items to confirm compliance with EU legislation:

- ✓ Conformity marking
- ✓ Documents
- ✓ Instructions
- ✓ Engine emissions labeling
- ✓ Noise emissions labelling
- ✓ Lifting applications
- ✓ Safety labels
- ✓ Access systems
- ✓ Airconditioning refrigerant
- ✓ Operator protection
- ✓ Battery labelling



## 1. IDENTIFICATION OF MACHINE AND MANUFACTURER

All construction machinery placed on the EU market must be marked clearly and permanently with the following, in one of the languages of the Community:

- ✓ Name and address of the manufacturer (and their authorised representative, if applicable)
- ✓ The CE mark
- ✓ Designation of the machinery
- ✓ Serial number of the machinery
- ✓ The year of construction
- ✓ The power in kW
- ✓ The machine operating mass in Kg



## BATTERIES



**A BRIEF GUIDE  
FOR IDENTIFICATION OF  
NON-COMPLIANT  
CONSTRUCTION MACHINERY**

**Is this excavator compliant  
with European legislation?**



# Brochures (example): Excavators

1. IDENTIFICATION OF MACHINE AND MANUFACTURER
2. DOCUMENTS
3. ENGINE EXHAUST EMISSION
4. NOISE EMISSIONS
5. LIFTING SAFETY
6. SAFETY LABELS
7. ACCESS SYSTEMS
8. BATTERIES
9. FLUORINATED GREENHOUSE GASES
10. OPERATOR PROTECTIVE STRUCTURES





# Brochures (example): Tower Cranes

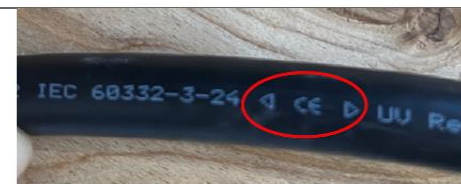

**TOWER CRANES**  
October 2009

**IMPROVED  
COMFORT  
AND SAFETY**

With the new  
European standard  
EN 14439

The EN 14439:2009  
Standard on 'Safety - Tower Cranes' has been developed after wide expert  
consultation in order to provide a balanced and up-to-date 'harmonised standard'  
requested by the European Community Machinery Directive.

<b>EN14439:2006 +A2:2009</b>	Falling of the trolley: The trolley pulleys must be protected against falling and designed in such a way that the trolley cannot fall.	
<b>EN 13135</b>	Wire rope on a drum should not go out of the drum: flanges are necessary for example. Flanges should be at least 1.5 times higher than the diameter of the rope.	

Visible CE labelling on electrical systems/components must be guaranteed (no standard, but labelling is handed out/marked by most component manufacturers):		
<b>EN 60204-32</b>	<ul style="list-style-type: none"> <li>- Cables,</li> <li>- Motors,</li> <li>- A/C,</li> <li>- Heater.</li> </ul>	
<b>EN 60204-32</b>	Measures to limit the generation of electromagnetic disturbances, conducted and radiated emission include the motors cables shielding.	

How to ensure a tower crane is safe: **check 22 key items from the EN14439** standard to verify compliance with EU safety regulations under the **Machinery Directive** (2006/42/EC).

# Future Actions and Collaboration

*Strengthening **partnerships** between manufacturers, associations, and market surveillance authorities is vital.*

Follow-up **seminars** and discussions.



*Built on a good practice*

*Expertise of the manufacturers*

**Online platform** to distribute these brochures effectively.

*Thank you...*

***Your insights  
matter***



# Contacts

[Riccardo.Viaggi@cece.eu](mailto:Riccardo.Viaggi@cece.eu) (Secretary General)

[Martina.griffo@cece.eu](mailto:Martina.griffo@cece.eu) (Health and Safety Policy Manager)



COMMITTEE FOR EUROPEAN  
CONSTRUCTION EQUIPMENT